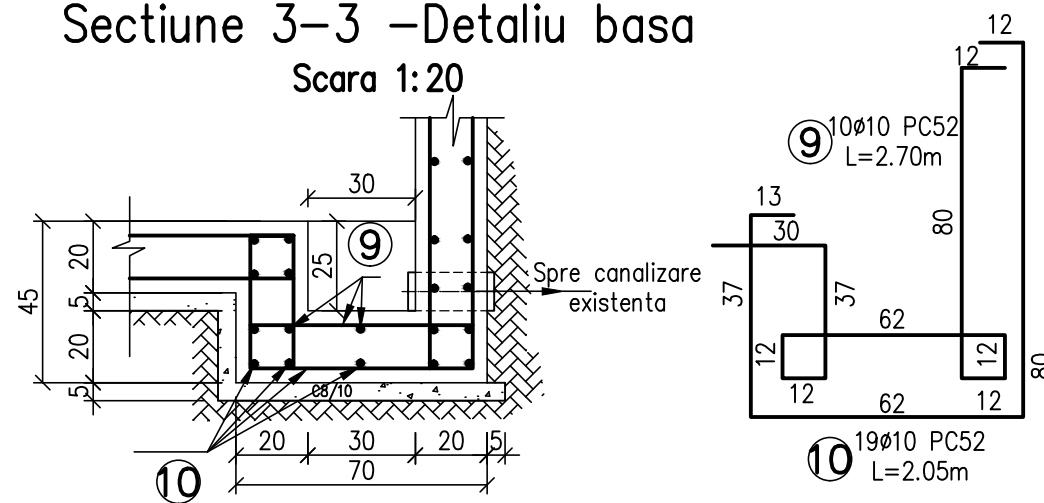


Sectioniune 3-3 -Detaliu basa
Scara 1:20









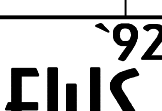

- Agregate naturale de masa volumetrica normala conf. SR EN 12620:2003
- Apa de amestec conf. SR EN 1008:2003
- Otel beton OB37 si PC52 conf. STAS438/1-89 si ST 009-05

CARACTERISTICI MATERIALE	
Beton de egalizare	C8/10
Beton armat	C30/37

EXTRAS DE ARMATURA

Marca	Diametrul	Nr.bare elemente		Lungimi in m a unei bare	L/Ø	
		Intr-un element	In toate elementele		OB37 Ø8	PC52 Ø10
1	10	14	14	4.88		68.3
2	10	14	14	4.64		65.0
3	10	12	12	6.84		82.1
4	10	12	12	6.36		76.3
5	10	6	6	12.78		76.7
6	10	6	6	12.30		73.8
7	10	32	32	0.80		25.6
8	8	120	120	0.30	36.0	
9	10	10	10	2.70		27.0
10	10	10	10	4.05		40.5
Total lungimi pe diametru					36.0	535.3
Kg/ml					0.395	0.617
Greutate pe diametre					14.2	330.3
Greutate totala Kg					344.48	

DOMENIUL DE EXIGENTA "A1"
CLASA DE IMPORTANTA "III"
CATEGORIA DE IMPORTANTA "C"

														
Rev.	Descriere			Data	Semnat	Rev.	Descriere			Data	Semnat			
Acest document este proprietatea S.C. ELLIS'92 S.R.L. si nu va fi comunicat fara autorizare														
Intocmit	Verificat	Aprobat		Beneficiar					Denumire proiect					
Zamfir A.	Petrosaau	Ionescu A.		CONPET SA					CONSTRUCTIE REZERVOARE PENTRU TITEL (V=2500 mc) STATIA DE POMPARE BILED TIMIS					
 arhitectura proiectare inginerie consultanta tehnica				CUVA DE BETON R1					Nr.: A646-CB-03		Rev 1			
									Scara: 1: 20; 1: 50					
									Index: A646-CB-BD					
									Material:				Masa: kg	